



SGM8741

45ns, Low-Power, 3V/5V, Rail-to-Rail Input Single-Supply Comparator

GENERAL DESCRIPTION

The SGM8741 is a single high-speed comparator optimized for systems powered from a 3V or 5V supply. The device features high-speed response, low-power consumption, and rail-to-rail input range. Propagation delay is 45ns, while supply current is only 155 μ A per comparator.

The input common mode range of the SGM8741 extends beyond both power supply rails. The output pulls to within 0.1V of either supply rail without external pull-up circuitry, making the device ideal for interface with both CMOS and TTL logics. All input and output pins can tolerate a continuous short-circuit fault condition to either rail. Internal hysteresis ensures clean output switching, even with slow-moving input signals.

The SGM8741 is available in Green SOT-23-5 and SC70-5 packages. It is rated over the -40°C to +85°C temperature range.

FEATURES

- **Fast, 45ns Propagation Delay (10mV Overdrive)**
- **Low Power Consumption:**
155 μ A (TYP) at $V_S = 3V$
- **Wide Supply Voltage Range: 2.7V to 5V**
- **Optimized for 3V and 5V Applications**
- **Rail-to-Rail Input Voltage Range**
- **Low Offset Voltage: 1mV**
- **Internal Hysteresis for Clean Switching**
- **Output Swing 210mV with 4mA Output Current**
- **CMOS/TTL-Compatible Output**
- **-40°C to +85°C Operating Temperature Range**
- **Available in Green SOT-23-5 and SC70-5 Packages**

APPLICATIONS

Line Receivers
 Battery-Powered Systems
 Threshold Detectors/Discriminators
 3V/5V Systems
 Zero-Crossing Detectors
 Sampling Circuits

SGM8741

45ns, Low-Power, 3V/5V, Rail-to-Rail Input Single-Supply Comparator

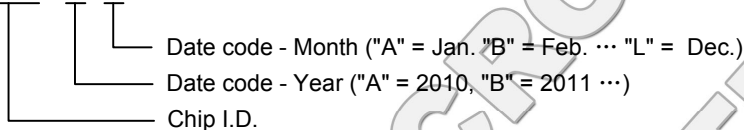
PACKAGE/ORDERING INFORMATION

| MODEL | PIN-PACKAGE | SPECIFIED TEMPERATURE RANGE | ORDERING NUMBER | PACKAGE MARKING | PACKAGE OPTION |
|---------|-------------|-----------------------------|-----------------|-----------------|---------------------|
| SGM8741 | SOT-23-5 | -40°C to +85°C | SGM8741YN5G/TR | SM4XX | Tape and Reel, 3000 |
| | SC70-5 | -40°C to +85°C | SGM8741YC5G/TR | SK8XX | Tape and Reel, 3000 |

NOTE: XX = Date Code.

MARKING INFORMATION

SY Y X X



For example: SK8AA (2010, January)

ABSOLUTE MAXIMUM RATINGS

| | |
|--|--|
| Supply Voltage, +V _S to -V _S | ±6V |
| V _{IN} Differential..... | ±2.5V |
| Voltage at Input/Output pins..... | (-V _S) - 0.3V to (+V _S) + 0.3V |
| Operating Temperature Range..... | -40°C to +85°C |
| Junction Temperature..... | 150°C |
| Storage Temperature Range..... | -65°C to +150°C |
| Lead Temperature (Soldering, 10s)..... | 260°C |

NOTE:

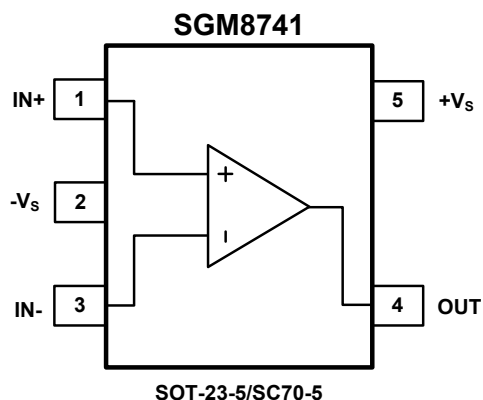
Stresses beyond those listed under "Absolute Maximum Ratings" may cause permanent damage to the device. These are stress ratings only, and functional operation of the device at these or any other conditions beyond those indicated in the operational sections of the specifications is not implied. Exposure to absolute maximum rating conditions for extended periods may affect device reliability.

CAUTION

This integrated circuit can be damaged by ESD if you don't pay attention to ESD protection. SGMICRO recommends that all integrated circuits be handled with appropriate precautions. Failure to observe proper handling and installation procedures can cause damage. ESD damage can range from subtle performance degradation to complete device failure. Precision integrated circuits may be more susceptible to damage because very small parametric changes could cause the device not to meet its published specifications.

SGMICRO reserves the right to make any change in circuit design, specification or other related things if necessary without notice at any time. Please contact SGMICRO sales office to get the latest datasheet.

PIN CONFIGURATIONS (TOP VIEW)



ELECTRICAL CHARACTERISTICS(V_S = 5V, V_{CM} = 0V, C_L = 15pF, typical values are at T_A = +25°C, unless otherwise noted.)

| PARAMETER | SYMBOL | CONDITIONS | MIN | TYP | MAX | UNITS |
|--|---------------------|---|------|-----|----------------------|-------|
| Operating Supply Voltage ⁽¹⁾ | V _S | | 2.7 | | 5.5 | V |
| Input Common Mode Voltage Range ⁽²⁾ | V _{CM} | | -0.1 | | V _S + 0.1 | V |
| Input Offset Voltage ⁽³⁾ | V _{OS} | V _S = 5V | | 1 | | mV |
| Input Hysteresis ⁽⁴⁾ | V _{HYST} | V _S = 5V | | 2.5 | | mV |
| Output Short-Circuit Current | I _{SOURCE} | V _S = 5V, Out to 0V | | 30 | | mA |
| | I _{SINK} | V _S = 5V, Out to V _S | | 35 | | |
| Common Mode Rejection Ratio ⁽⁵⁾ | CMRR | V _S = 5V, V _{CM} = 0V to 5V | | 65 | | dB |
| Power Supply Rejection Ratio | PSRR | V _{CM} = 0V, V _S = 3V to 5V | | 85 | | dB |
| Output Voltage Swing from Rail | V _{OH} | I _O = 4mA | | 210 | | mV |
| | V _{OL} | I _O = -4mA | | 170 | | |
| Supply Current | I _S | V _S = 3V, I _O = 0 | | 155 | | μA |
| | | V _S = 5V, I _O = 0 | | 160 | | |
| Propagation Delay (High to Low) | | V _S = 3V, Overdrive = 10mV | | 45 | | ns |
| | | V _S = 3V, Overdrive = 100mV | | 23 | | |
| Propagation Delay (Low to High) | | V _S = 3V, Overdrive = 10mV | | 35 | | ns |
| | | V _S = 3V, Overdrive = 100mV | | 25 | | |
| Rise Time | t _{RISE} | Overdrive = 10mV | | 9 | | ns |
| | | Overdrive = 100mV | | 6 | | |
| Fall Time | t _{FALL} | Overdrive = 10mV | | 10 | | ns |
| | | Overdrive = 100mV | | 5 | | |

NOTES:

1. Inferred from PSRR test.
2. Inferred from PD test. Note also that either or both inputs can be driven to the absolute maximum limit (0.1V beyond either supply rail) without damage or false output inversion.
3. V_{OS} is defined as the center of the input-referred hysteresis zone. See Figure 1.
4. The input-referred trip points are the extremities of the differential input voltage required to make the comparator output change state. The difference between the upper and lower trip points is equal to the width of the input-referred hysteresis zone. See Figure 1.
5. Specified over the full input common mode voltage range (V_{CM}).

DETAILED DESCRIPTION

The SGM8741 is a single-supply comparator that features internal hysteresis, high speed, and low power. Its output is pulled to within 210mV of either supply rail without external pull-up or pull-down circuitry. Rail-to-rail input voltage range and low-voltage single-supply operation make the device ideal for portable equipments. The SGM8741 interfaces directly to CMOS and TTL logics.

Most high-speed comparators oscillate in the linear region because of noise or undesired parasitic feedback. This tends to occur when the voltage on one input is at or equal to the voltage on the other input. To counter the parasitic effects and noise, the SGM8741 has an internal hysteresis of 2.5mV.

The hysteresis in a comparator creates two trip points: one for the rising input voltage and one for the falling input voltage (Figure 1). The difference between the trip points is the hysteresis. The average of the trip points is the offset voltage. When the comparator's input voltages are equal, the hysteresis effectively causes one comparator input voltage to move quickly past the other, thus taking the input out of the region where oscillation occurs. Standard comparators require hysteresis to be added with external resistors. The SGM8741's fixed internal hysteresis eliminates these resistors. To increase hysteresis and noise margin even more, add positive feedback with two resistors as a voltage divider from the output to the non-inverting input.

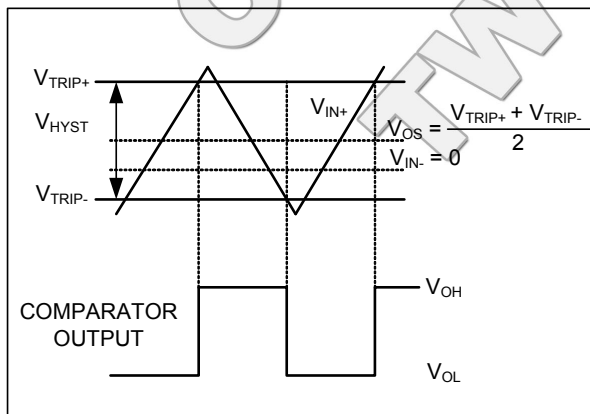


Figure 1. Input and Output Waveform,
Non-inverting Input Varied

Figure 1 illustrates the case where $IN-$ is fixed and $IN+$ is varied. If the inputs were reversed, the figure would look the same, except the output would be inverted.

Output Stage Circuitry

The SGM8741 contains a current-driven output stage as shown in Figure 2. During an output transition, I_{SOURCE} or I_{SINK} is pushed or pulled to the output pin. The output source or sink current is high during the transition, creating a rapid slew rate. Once the output voltage reaches V_{OH} or V_{OL} , the source or sink current decreases to a small value, capable of maintaining the V_{OH} or V_{OL} static condition. This significant decrease in current conserves power after an output transition has occurred.

One consequence of a current-driven output stage is a linear dependence between the slew rate and the load capacitance. A heavy capacitive load will slow down a voltage output transition. This can be useful in noise-sensitive applications where fast edges may cause interference.

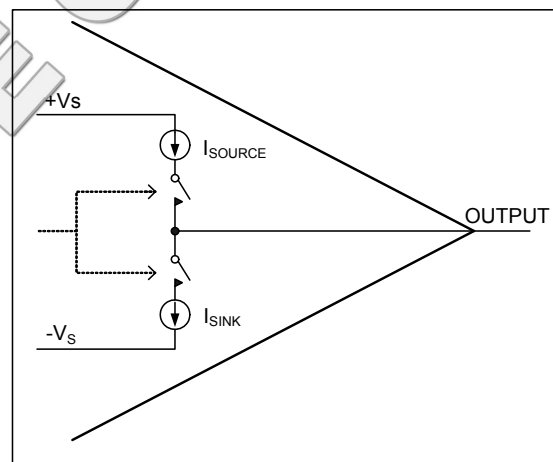


Figure 2. Output Stage Circuitry

APPLICATION INFORMATION

Circuit Layout and Bypassing

The high gain-bandwidth product of the SGM8741 requires design precautions to realize the full high-speed capabilities of the comparator. The recommended precautions are:

- 1) Use a PCB with a good, unbroken, low-inductance ground plane.
- 2) Place a decoupling capacitor (a 0.1µF ceramic capacitor is a good choice) as close to V_S as possible.
- 3) Pay close attention to the decoupling capacitor's bandwidth, keeping leads short.
- 4) On the inputs and output, keep lead lengths short to avoid unwanted parasitic feedback around the comparator.
- 5) Solder the device directly to the PCB instead of using a socket.

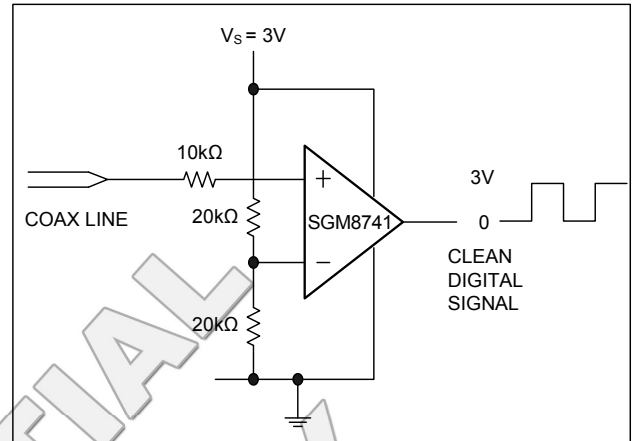


Figure 4. Line Receiver Application

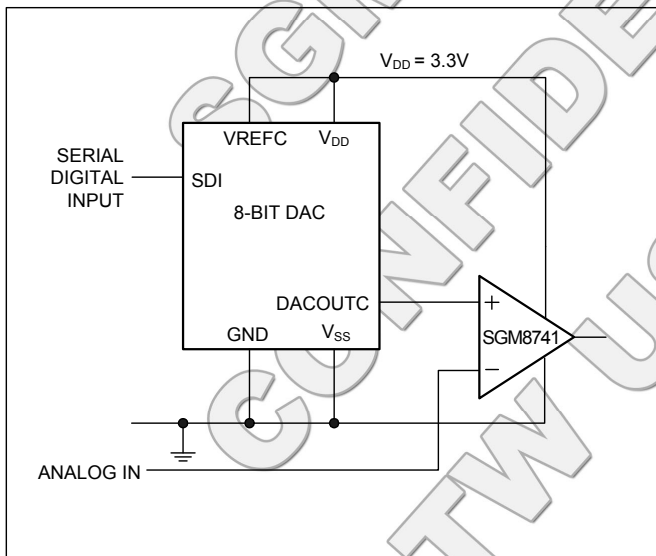
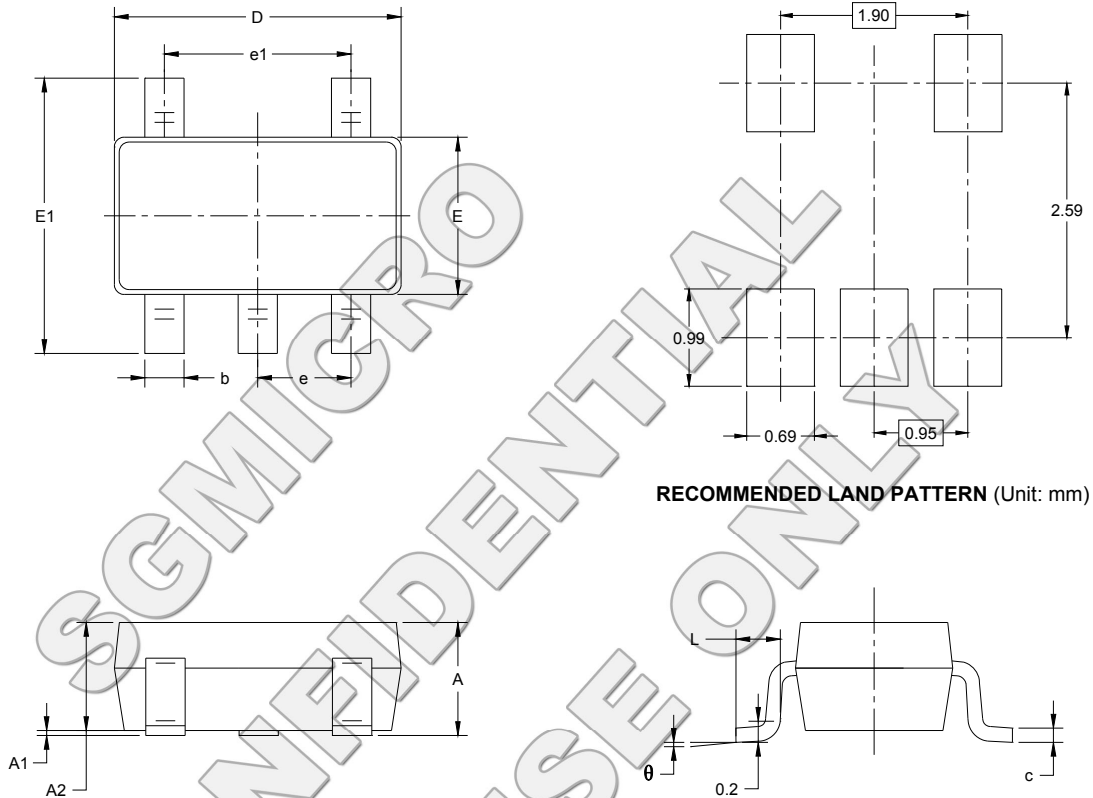


Figure 3. 3.3V Digitally Controlled Threshold Detector

PACKAGE OUTLINE DIMENSIONS

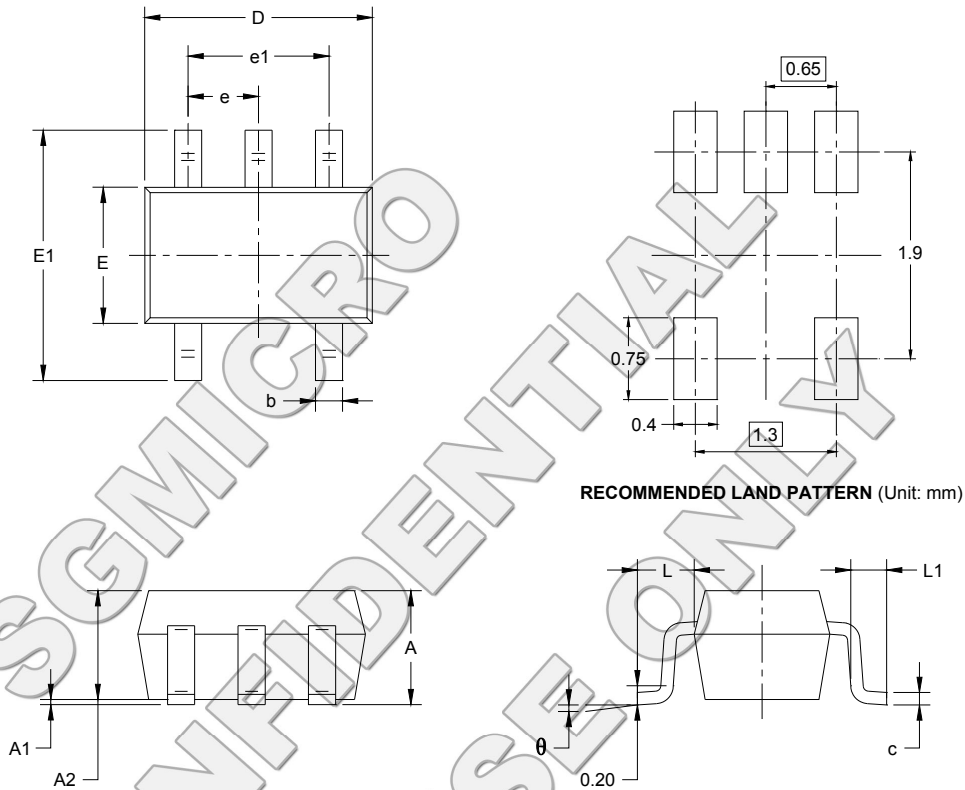
SOT-23-5



| Symbol | Dimensions In Millimeters | | Dimensions In Inches | |
|--------|------------------------------|-------|-------------------------|-------|
| | MIN | MAX | MIN | MAX |
| A | 1.050 | 1.250 | 0.041 | 0.049 |
| A1 | 0.000 | 0.100 | 0.000 | 0.004 |
| A2 | 1.050 | 1.150 | 0.041 | 0.045 |
| b | 0.300 | 0.500 | 0.012 | 0.020 |
| c | 0.100 | 0.200 | 0.004 | 0.008 |
| D | 2.820 | 3.020 | 0.111 | 0.119 |
| E | 1.500 | 1.700 | 0.059 | 0.067 |
| E1 | 2.650 | 2.950 | 0.104 | 0.116 |
| e | 0.950 BSC | | 0.037 BSC | |
| e1 | 1.900 BSC | | 0.075 BSC | |
| L | 0.300 | 0.600 | 0.012 | 0.024 |
| θ | 0° | 8° | 0° | 8° |

PACKAGE OUTLINE DIMENSIONS

SC70-5

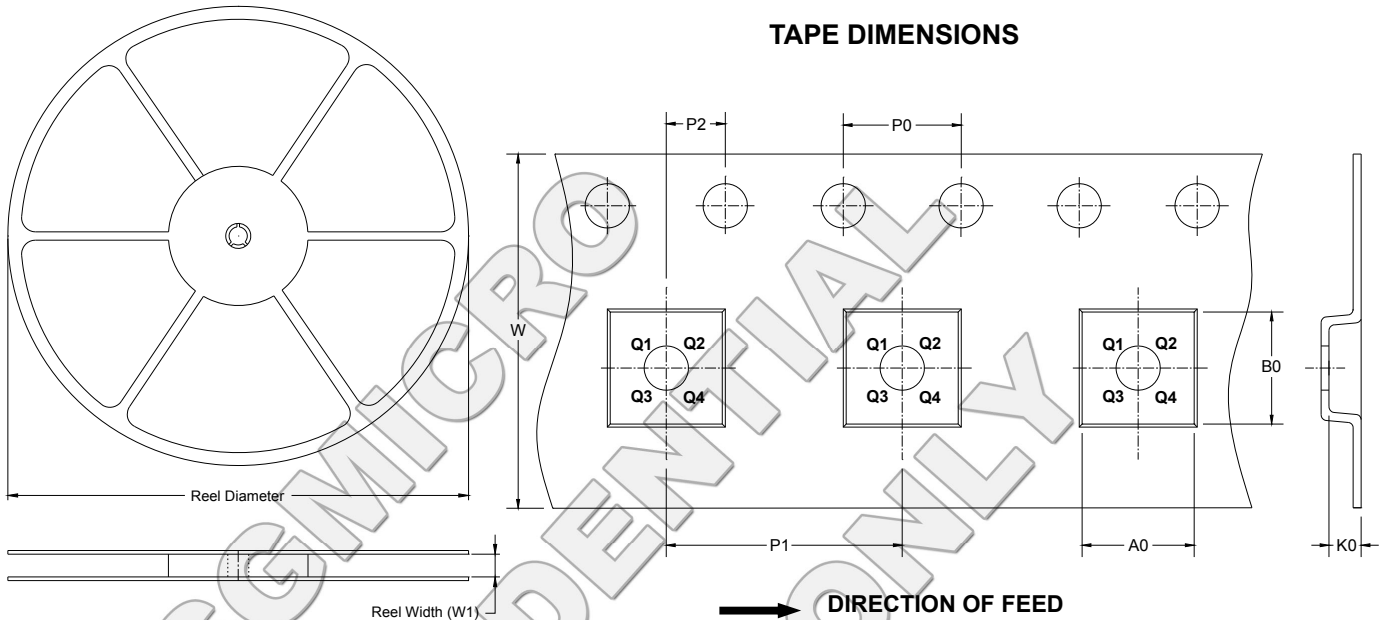


| Symbol | Dimensions In Millimeters | | Dimensions In Inches | |
|--------|------------------------------|-------|-------------------------|-------|
| | MIN | MAX | MIN | MAX |
| A | 0.900 | 1.100 | 0.035 | 0.043 |
| A1 | 0.000 | 0.100 | 0.000 | 0.004 |
| A2 | 0.900 | 1.000 | 0.035 | 0.039 |
| b | 0.150 | 0.350 | 0.006 | 0.014 |
| c | 0.080 | 0.150 | 0.003 | 0.006 |
| D | 2.000 | 2.200 | 0.079 | 0.087 |
| E | 1.150 | 1.350 | 0.045 | 0.053 |
| E1 | 2.150 | 2.450 | 0.085 | 0.096 |
| e | 0.65 TYP | | 0.026 TYP | |
| e1 | 1.300 BSC | | 0.051 BSC | |
| L | 0.525 REF | | 0.021 REF | |
| L1 | 0.260 | 0.460 | 0.010 | 0.018 |
| θ | 0° | 8° | 0° | 8° |

TAPE AND REEL INFORMATION

REEL DIMENSIONS

TAPE DIMENSIONS

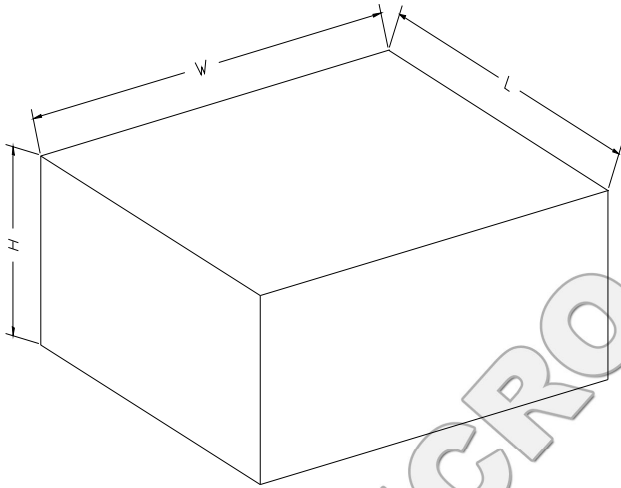


NOTE: The picture is only for reference. Please make the object as the standard.

KEY PARAMETER LIST OF TAPE AND REEL

| Package Type | Reel Diameter | Reel Width W1 (mm) | A0 (mm) | B0 (mm) | K0 (mm) | P0 (mm) | P1 (mm) | P2 (mm) | W (mm) | Pin1 Quadrant |
|--------------|---------------|--------------------|---------|---------|---------|---------|---------|---------|--------|---------------|
| SOT-23-5 | 7" | 9.5 | 3.2 | 3.2 | 1.4 | 4.0 | 4.0 | 2.0 | 8.0 | Q3 |
| SC70-5 | 7" | 9.5 | 2.25 | 2.55 | 1.20 | 4.0 | 4.0 | 2.0 | 8.0 | Q3 |

CARTON BOX DIMENSIONS



NOTE: The picture is only for reference. Please make the object as the standard.

KEY PARAMETER LIST OF CARTON BOX

| Reel Type | Length (mm) | Width (mm) | Height (mm) | Pizza/Carton |
|-------------|-------------|------------|-------------|--------------|
| 7" (Option) | 368 | 227 | 224 | 8 |
| 7" | 442 | 410 | 224 | 18 |